

MACHINERY



EXPERIENCE IN THE METAL SECTOR

in INDUSTRIAL MOREYPI S.A.

 www.moreypi.com

WORKSHOP 1 | WORKSHOP 2





SUBMERGED ARC WELDING MACHINE AS-001

BRAND	BODE I-20217
MODEL	T R C . M:21225
FABRICATION DATE	1991
CODE	AS-001
POTENCIA	150A/16V-1300A/46V
SERIE	F1991

CUTTING MACHINE CZ-01

BRAND	MEBUSA-0236
MODEL	PH- 300 y 400
FABRICATION DATE	1982
CODE	CZ - 001
FORCE	300 Ton
POTENCIA MOTOR	40 cv
MAX WORKING PRESSURE	328 bar
HYDRAULIC FLUID	ACEITE DROP 280
DELTA	260 lts
LENGTH	4250 mm
WIDTH	2290
POTENCIA	380,220 / 110 V
HEIGHT	4500



COMPRESSOR C-001

BRAND	ALUP
MODEL	TREND
FABRICATION DATE	2005
CODE	C-001



BENDING MACHINES CU-001

BRAND	FACCIN
MODEL	4HEL3139
FABRICATION DATE	2000
CODE	CU-001
DIMENSIONS	5700 Log X 2100 anch.X1830 HIGH
DIAMETER RODILLO SUPERIOR	390
DIAMETER RODILLO INFERIOR	370
RODILLO LATERALES	290
POTENCIA	380 V ,50 Hz,37Kw
DIAMETER	445 X 15 ESOESOR X 3000 tabla
DIAMETER	1850 X 230 esp



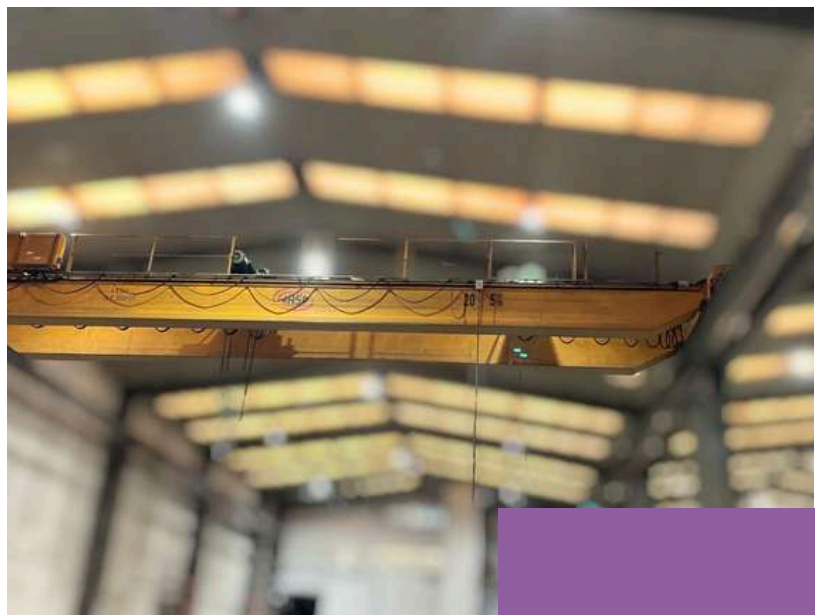


OVERHEAD CRANES PG-001

BRAND	JASO
MODEL	EG200H10 4/1
FABRICATION DATE	2006
CODE	PG-001

OVERHEAD CRANES PG-002

BRAND	JASO
MODEL	EG200H10 4/1
FABRICATION DATE	2006
CODE	PG-002



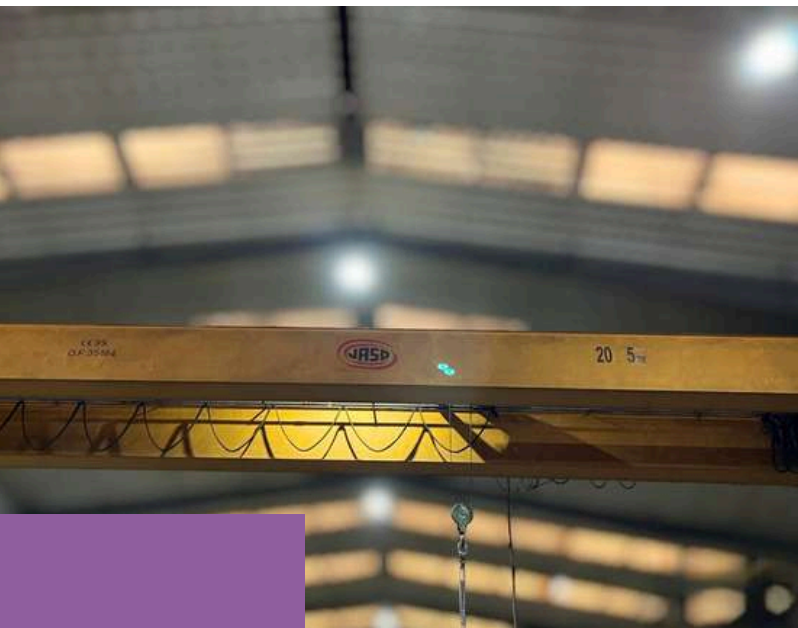
OVERHEAD CRANES PG-003

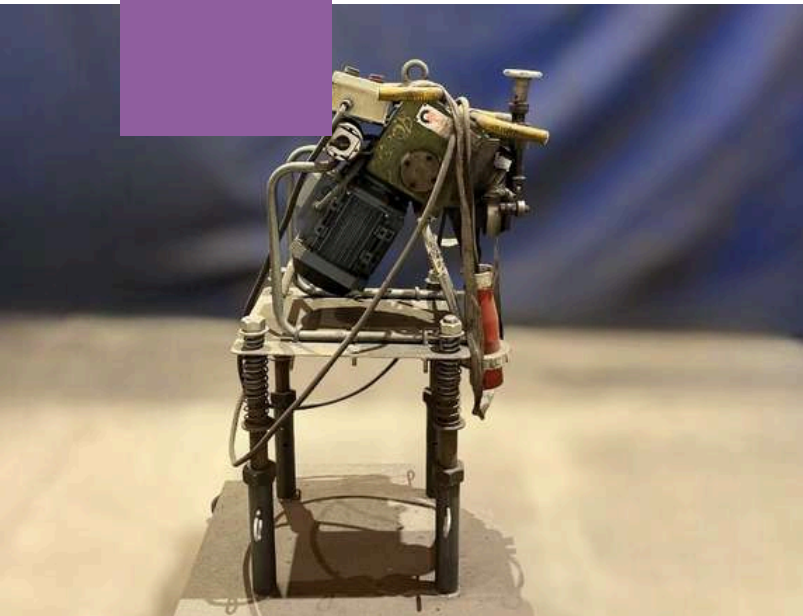
BRAND	JASO
MODEL	EG200H10 4/1
FABRICATION DATE	2006
CODE	PG-003



OVERHEAD CRANES PG-004

BRAND	JASO
MODEL	EG200H10 4/1
FABRICATION DATE	2006
CODE	PG-003



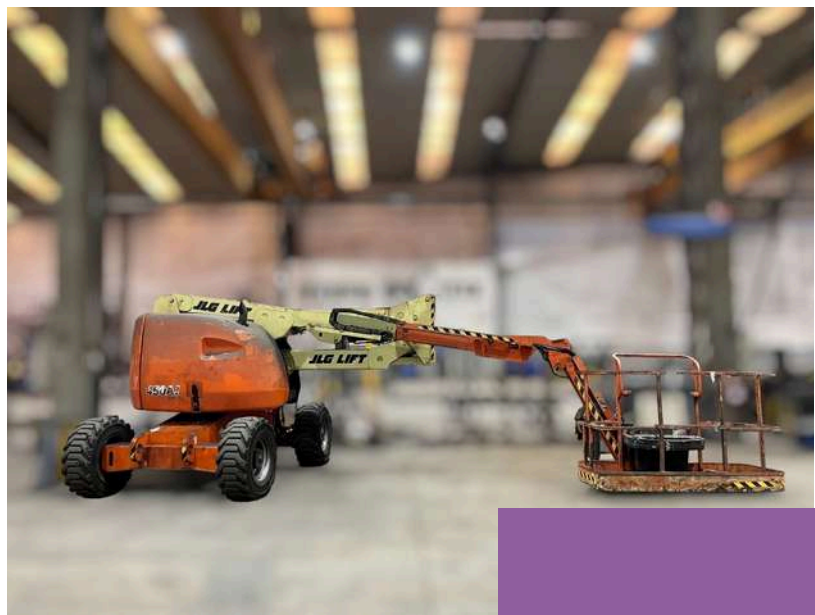


BEVELING MACHINES B-001

BRAND	ABBA Motors
MODEL	CEVSA
CODE	B-001

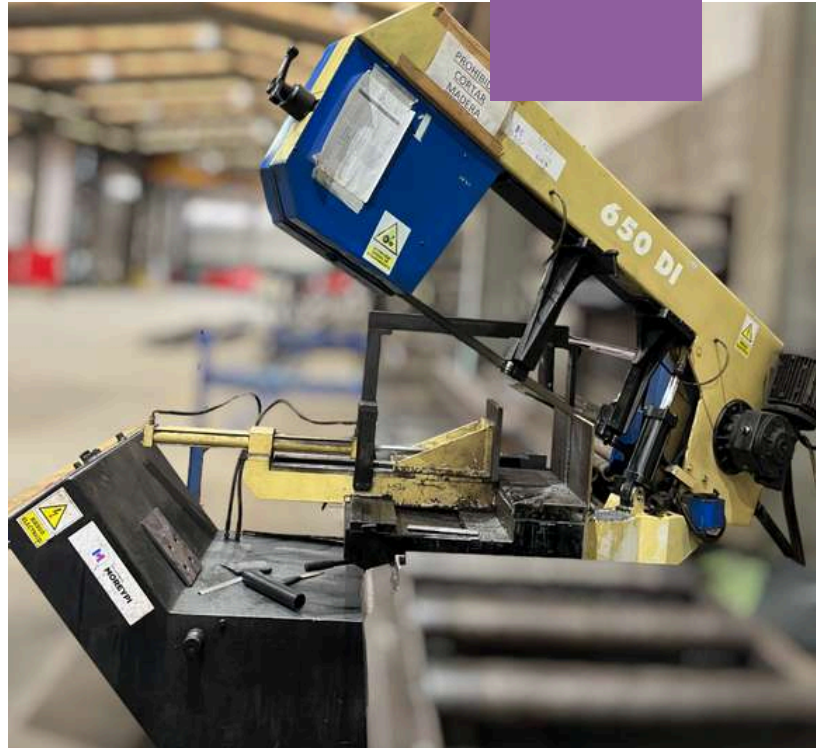
CHERRY PICKERS PEM-00

BRAND	JLG
MODEL	450 AJ
FABRICATION DATE	2002
CODE	PEM-001



SAW S-001

BRAND	MJM
MODEL	650 / D I
FABRICATION DATE	07 / 2007
CODE	S-001
WEIGHT	1250 kg
CINTA	# 1250



DRILL TC-001

BRAND	IBARMIA
MODEL	35-CA
CODE	TC-001
DRILLING CAPACITY	mm 35
CONO	CM-4
POTENCIA MOTOR PRINCIPAL	Kw. 2 CV

LATHE MACHINE T-00



BRAND	JASHÖNE
MODEL	M-215-E
CODE	T-001
DISTANCE BETWEEN POINTS	1.500mm.
VOLTEO	430mm.
VOLTEO SOBRE CARRO	240mm.
VOLTEO SOBRE ESCOTE	580mm.
HOLE	104mm.

SHEARING MACHINES 15.1.1

BRAND	MEBUSA-0236
MODEL	PH- 300 y 400
CODE	CZ - 001
FORCE	300 Ton
POTENCIA MOTOR	40 cv
MAX. OPERATING PRESSURE	328 bar
HYDRAULIC FLUID	ACEITE DROP 280 DELTA / 260 lts
LENGTH	4250 mm
WIDTH	2290 380,220 / 110 V
HEIGHT	4500



COMPRESSOR 15.1.2

BRAND	Hydrovane 07
MODEL	Comp Air
FABRICATION DATE	11-06-98
CODE	C-001
VÁLVULA DE SEGURIDAD	1" x 9 bar
RPM	1460
MAX. OPERATING PRESSURE	8 bar
HYDRAULIC FLUID	Fluid forcé 2000
LENGTH	1252 mm
WIDTH	160 kg



PLASMA AND OXYCUTTING MACHINE 15.1.3

BRAND	TECOI
MODEL	TEKNOS 4000
FABRICATION DATE	2018
USEFUL CUTTING AREA	6200 X 3100 12200 X 3100 24200 X 3100
ESWEIGHTR MÍNIMO CHAPA	1mm
ESWEIGHTR MÁXIMO CHAPA	30mm
SPEED POSITIONING	40m/min
CONEXIÓN	230 V 50 Hz 15 Kw
BANCADA INDEPENDIENTE	C/ CAJONES PARA ESCORIA





CLADDING MACHINE

BRAND	POLYSOUDE
MODEL	MO-DT-1000
FABRICATION DATE	2018
DIAMETER	1,2 mm

VAN 15.1.4

BRAND	RENAULT DCI 120
MODEL	X70M
FABRICATION DATE	03/10/2007
WEIGHT	3500 kg
POTENCIA	120 cv
ACEITE	50 w 40,30
MOTOR	G9U 7.5 Litros



ELECTRO-POINT MACHINE 15.1.5

BRAND	ELESA
MODEL	SNPA-18
CODE	MEP-001
ALIMENTACIÓN TRIFÁSICA	50- Hz. 18 Kva



HYDRAULIC BENDER 15.1.6

BRAND	MEBUSA - PROMECAN
MODEL	RG-2400-80
FABRICATION DATE	1969
CODE	PL - 002
FORCE	80 ton
PRESIÓN	328 bar
LENGTH	2465 mm
WIDTH	1430 mm
HIGH	1980 mm
MOTOR ELÉCTRICO	12 cv 220/380 v



HYDRAULIC BENDER 15.1.7



BRAND	MEBUSA - 3600
MODEL	PH - 304
FABRICATION DATE	1986
CODE	PL - 003
FORCE	300 ton
MAX WORKING PRESSURE	328 bar
LITROS DE ACEITE	260
LENGTH	4250 MM
WIDTH	2290 MM
HEIGHT	4500 MM

OVERHEAD CRANES PG-001 15.1.9

BRAND	GH
MODEL	GHB
FABRICATION DATE	2008
CODE	PG - 001
CAP	6 ton
CABLE	16 mm
TIPO POLIPASTO	GHB 3y6 Grapas 10 x 10 grapa
RPM	3000/500
KW	3.2
GRASA	Grafitada Markaf 00 /* Verkol WG
ACEITES	Mobilplex 44 / Mobilux - 3



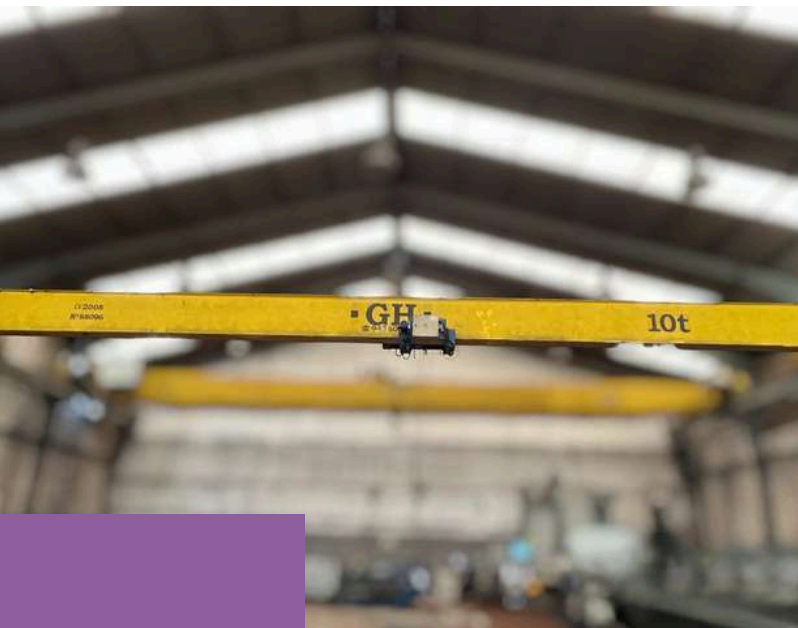
OVERHEAD CRANES PG-002 15.1.10

BRAND	GH
MODEL	GHB
FABRICATION DATE	1971
CODE	PG - 002
CAP	6 ton
CABLE	16 mm
TIPO POLIPASTO	GHB 3y6 Grapas 10 x 10 grapa
RPM	3000/ 500
KW	3.2
GRASA	Grafitada Markaf 00 /* Verkol WG
ACEITES	Mobilplex 44 / Mobilux - 3

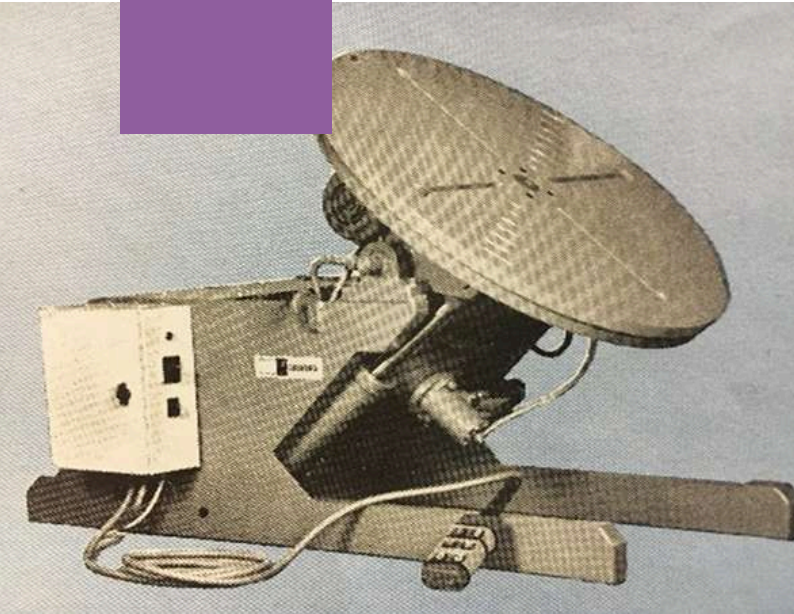


OVERHEAD CRANES PG-003 15.1.11

BRAND	GH
MODEL	GH
FABRICATION DATE	2008
CODE	PG - 003
CAP	10 ton
CABLE	12 mm
TIPO POLIPASTO	GHB 3y6 Grapas 10 x 10 grapa
RPM	3000/ 500
KW	7.5/1, 25 kw
GRASA	Grafitada Markaf 00 /* Verkol WG
ACEITES	Mobilplex 44 / Mobilux - 3



POSITIONER V-001 15.1.19



BRAND	SEO
MODEL	AC 1000 H
FABRICATION DATE	1987
CODE	V-001
WEIGHT	780 kg
HORIZONTAL	600 kg
VERTICAL	1000 kg a 230 mm de plato

HYDRAULIC PRESS 15.1.8

BRAND	Munarriz
MODEL	3 cilindros
FABRICATION DATE	1976
CODE	PH-001
LENGTH	4250 mm
WIDTH	2290 mm
HEIGHT	4500 mm
MOTOR	20HP - 15 cv
MAX WORKING PRESSURE	328 bar



ROLLING MACHINE R-001 15.1.12

BRAND	BIKO
MODEL	3 HCD / 1518
FABRICATION DATE	2002
CODE	R-001
POTENCIA	7.5 hp
WEIGHT	2.2 ton
GRASA	ISO XM0
ACEITE HIDRÁULICO	HV 46
ACEITE PLANETARIO	ISO CC 150
LENGTH	1550 mm
DIAMETER	185 c/u
RODILLOS	3



ROLLING MACHINE R-002 15.1.13

CODE	R-002
POTENCIA	7.5 hp
WEIGHT	2.2 ton
GRASA	ISO XM0
ACEITE HIDRÁULICO	HV 46
ACEITE PLANETARIO	ISO CC 150
LENGTH	1550 mm
DIAMETER	185 c/u
RODILLOS	3



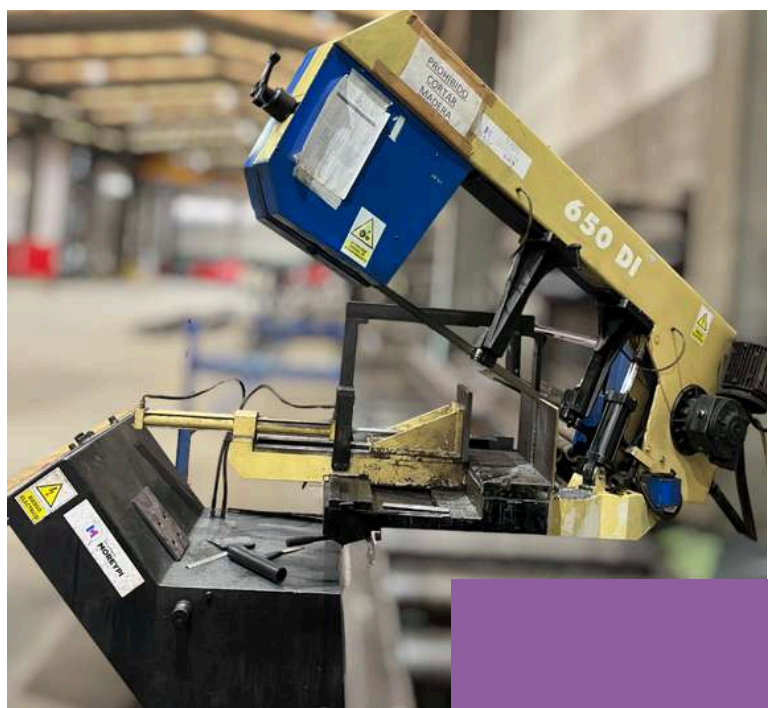


ROLLING MACHINE R-003 15.1.14

BRAND	CMZ
MODEL	CMZ
CODE	R-003
POTENCIA	5.5 hp
WEIGHT	800 Kls
GRASA	ISO XMO
ACEITE HIDRÁULICO	N/A
ACEITE PLANETARIO	N/A
LENGTH	1227MM
DIAMETER	900MM
RODILLOS	3

SHEARS S-001 15.1.15

BRAND	MJM - 650
MODEL	650 / D I
FABRICATION DATE	09 / 2007
CODE	S-001
WEIGHT	1250 kg
CINTA	# 1250



SHEARS S-002

15.1.16

BRAND	MJM - 270
MODEL	M-270
FABRICATION DATE	1997
CODE	S-002
WEIGHT	310 kg
MOTOR TRIFÁSICO	0.8 - 1.5
CINTA	2450x25x0.9
ESWEIGHTR DE CORTE	1.2 mm
CORTE	90* a 45*



DRILLING MACHINE

T-001 15.1.47

BRAND	ERLO
MODEL	ERLO TCA- 50
CODE	T-001





DRILLING MACHINE T-002 15.1.18

BRAND	EGA
MODEL	CH-16 N
FABRICATION DATE	1987
CODE	T-002